

Spatial Planning comments for the Merafong Cemetery Plan February 2025.

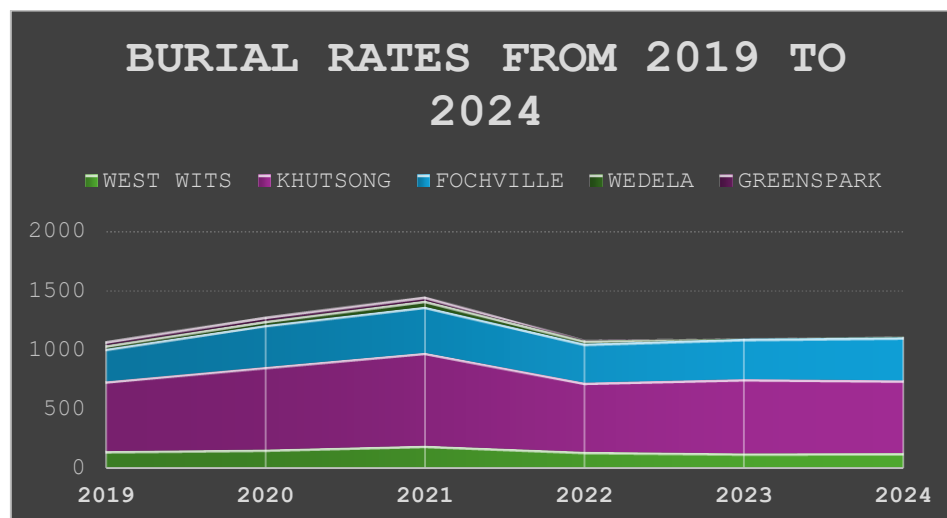
Please note that quick statistics have been provided to assist in the formulation of the plan. Proper comments on the statistics have not been provided as the Spatial Planning Section is not in a position to provide knowledgeable comments on burial trends. The guidelines on facilities provided by the Council for Scientific and Industrial Research were used in the spatial planning of cemeteries.

Quick stats:

Table 1. The burial rate in Merafong between 2019 and 2024.

Year	WEST WITS	KHUTSONG	FOCHVILLE	WEDELA	GREENSPARK
2019	146	588	277	30	29
2020	158	700	354	36	32
2021	192	784	390	52	31
2022	139	586	330	28	1
2023	126	627	342	0	0
2024	128	616	366	1	0

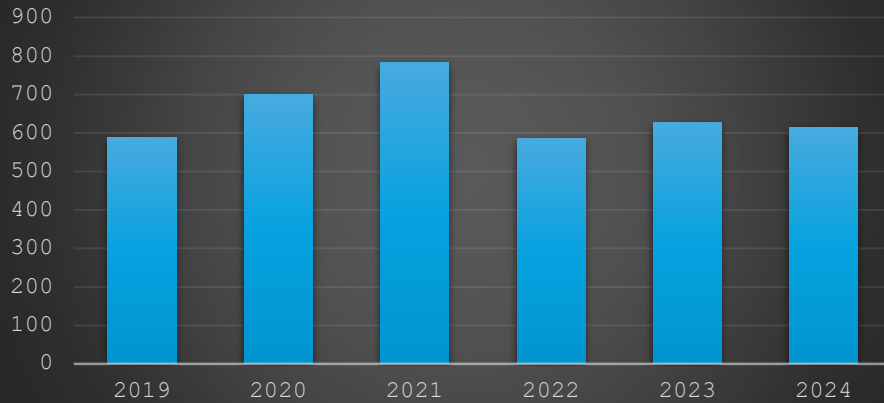
Figure 1. The change in burial numbers in Merafong between 2019 and 2024



- A significant increase in burials occurred between 2020 and 2021. This can mainly be attributed to the COVID 19 pandemic directly and possibly indirectly.
- Greenspark and Wedela cemeteries are temporarily closed due to problems experienced on site. Burials are diverted to other cemeteries. This does not seem to have caused any major problems at the receiving cemeteries, as far as burial rates go.
- The average number of burials (2019-2024) is around 1 181 per year. A slight decrease from the average for the previous decade
- From 2019 to 2024 there has been a slight increase in overall burials. This increase is not significant.

KHUTSONG

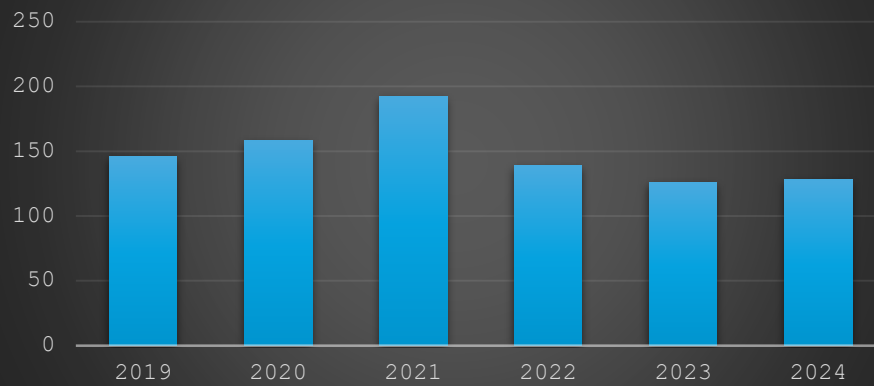
Khutsong burials



- Land description: Portion 6 of the Farm Uitspanning aan Wonderfontein 104 I.Q.
- Size: ± 22.3 Ha
- Used: ± 14.6 Ha
- Remaining: ± 7.7 Ha
- Current burial rate: 621/year (Average over 2 years)
- Cemetery operational lifespan at current rate = 12 years on Portion 6.
- Comments:
 - ✓ Burial rate is relatively stable, except for the COVID spike.
 - ✓ Minimise wastage of space, otherwise estimates will be inaccurate.
 - ✓ The current position of the fence goes far beyond the property boundary on the eastern side. Therefore, the cemetery is smaller than it seems.
 - ✓ Begin planning expansion at least 3 years ahead of running out of space.
 - ✓ Re-assess at least once every 3 years.

CARLETONVILLE (WEST WITS)

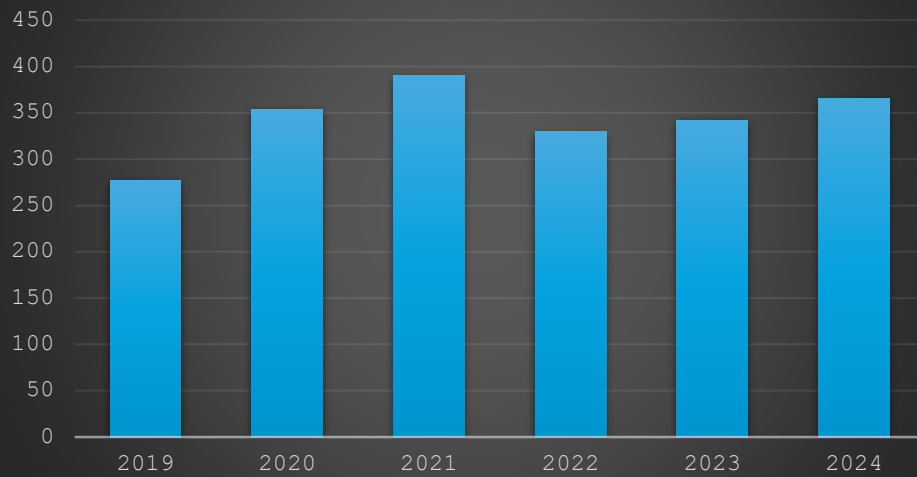
West Wits burials



- Land description: Portion 5 of the Farm Vlakplaats 112 I.Q.
- Size: ± 21.7 Ha
- Used: ± 14.1 Ha
- Remaining: ± 7.6 Ha
- Current burial rate: 127/year
- Cemetery operational lifespan at current rate = 65 years on Portion 5.
- EIA needed if future expansion on Portion 5 is more than 2 500m² at a time. A Geotechnical report may be required by an EIA's Record of Decision.

FOCHVILLE

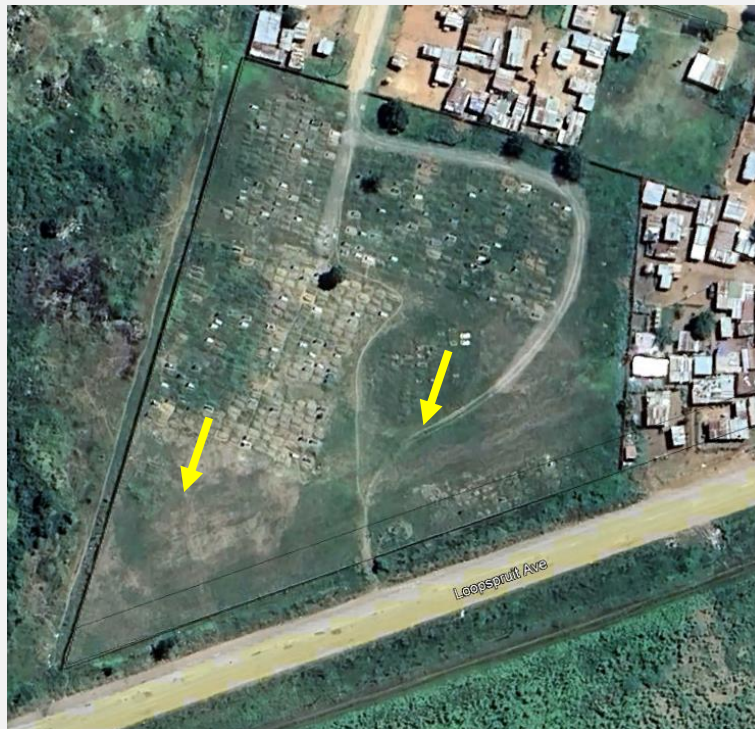
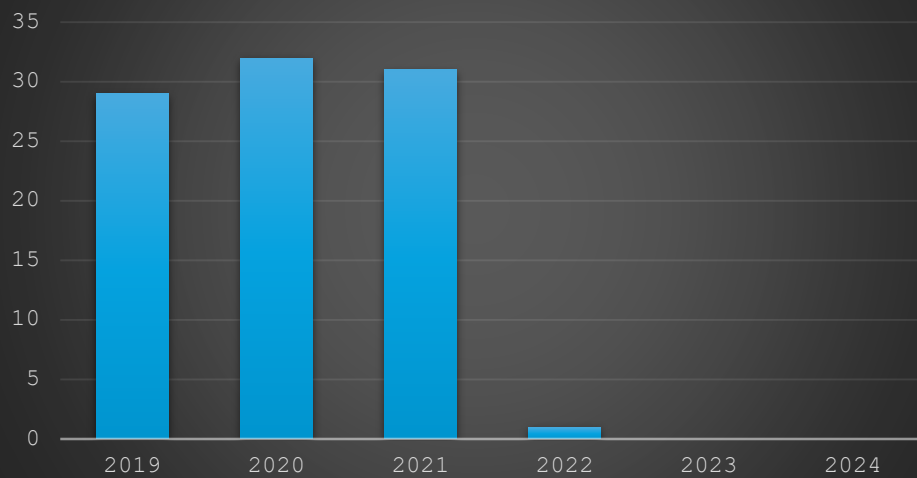
Fochville burials



- Land description: Portion 5 and 18 of the Farm Foch 150 I.Q.
- Size: 12.27 Ha
- Used: 7.03 Ha
- Remaining: 5.24 Ha
- Current burial rate: 354/year
- Cemetery operational lifespan at current rate = 16 years
- Space wastage, presumably caused primarily by a lack of proper measurement of grave spacing has caused the cemetery to fill up at a faster rate than anticipated. This should be corrected.
- If the space wastage does not stop, the cemetery lifespan will be reduced.

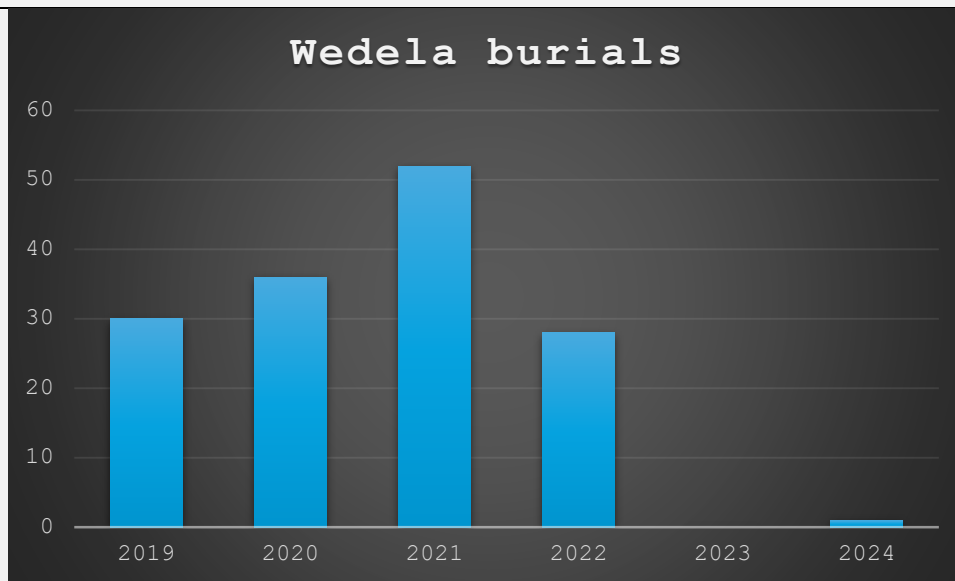
GREENSPARK

Greenspark burials



- Land description: Erf 243 Greenspark.
- Size: ± 1.4 Ha
- Used: 0.96 Ha
- Remaining: 0.44 Ha
- Current burial rate: N/A
- Cemetery operational lifespan at current rate = N/A
- Cemetery is temporarily closed for new burials due to the high water table.

WEDELA



- Land description: Portion 1 and 9 of the Farm Buffelsdoorn 143 I.Q.
- The land does not belong to Merafong. It is not known what agreements have been signed between the land owner and municipality. The Parks Section should investigate this. Another new area has been developed for expansion recently.
- Size: Unknown, about 1.27 Ha remaining on the same land parcel as the new extension.
- Used: 1.5 Ha
- Remaining: Unknown, about 1.27 Ha remaining on the same land parcel as the new extension.
- Current burial rate: N/A
- Cemetery operational lifespan at current rate = N/A
- The Wedela cemetery is temporarily closed for new burials.

Calculation Method:

- Standard adult grave = (Length + space between graves) x (Width + space between graves)
$$= (2.6\text{m} + 0.6) \times (1.4 + 0.6)$$
$$= 6.4$$
- 20% space for circulation and wastage
- Time Remaining = [(Space remaining – 20%) ÷ Standard adult grave] ÷ Annual number of burials